

RIHA GLAS & METALL

BESCHLAGSYSTEME



Elegant
Dezent
Formvollendet
Zeitlos
Aus Edelstahl und Messing

Qualität hat einen Namen
RIHA



Glastechnik Ges.m.b.H.

Palmgasse 10
A-1150 Wien

Tel. 0043 1 892 35 29
Fax 0043 1 892 33 81

www.glastechnik-riha.at
office@glastechnik-riha.at

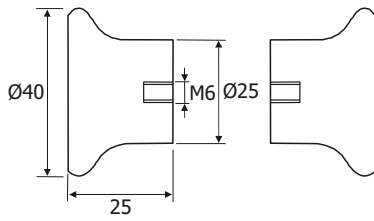


2.2 GRIFFKNÖPFE

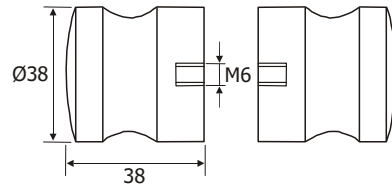
GRIFFKNÖPFE

Abmessungen und Lochbohrung

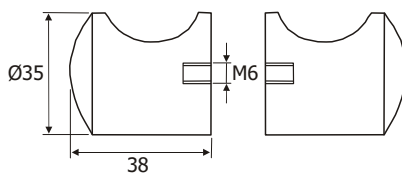
**Art.Nr.
220 201**



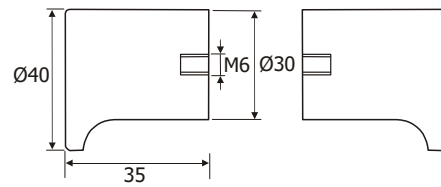
**Art.Nr.
220 204**



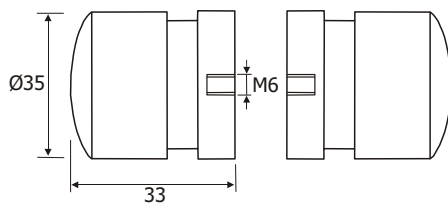
**Art.Nr.
220 205**



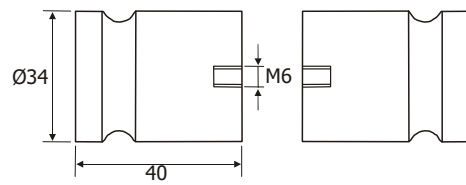
**Art.Nr.
220 206**



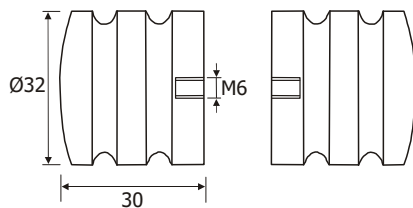
**Art.Nr.
220 207**



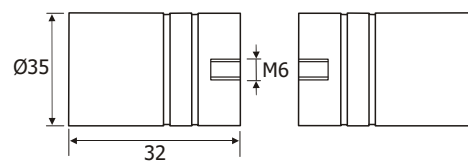
**Art.Nr.
220 208**



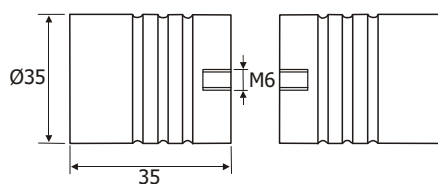
**Art.Nr.
220 209**



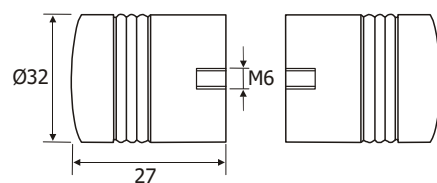
**Art.Nr.
220 210**



**Art.Nr.
220 211**



**Art.Nr.
220 212**



Lochbohrung Ø 12mm

Art.Nr. 220 201



Art.Nr. 220 204



Art.Nr. 220 205



Art.Nr. 220 206



Art.Nr. 220 207



Art.Nr. 220 208



Art.Nr. 220 209



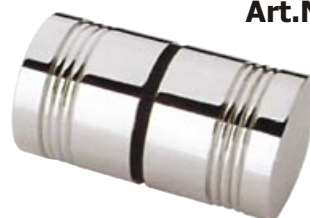
Art.Nr. 220 210



Art.Nr. 220 211



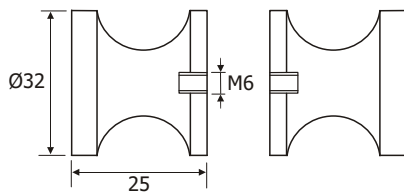
Art.Nr. 220 212



Abmessungen und Lochbohrung

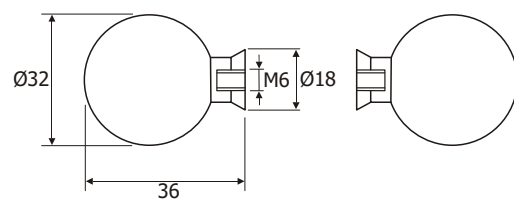
Art.Nr. 220 219

Lochbohrung Ø 12mm



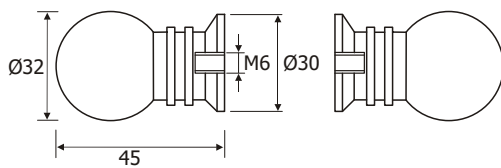
Art.Nr. 220 225

Lochbohrung Ø 12mm



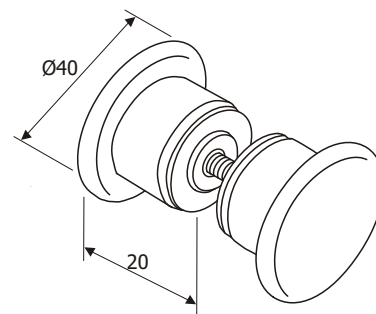
Art.Nr. 220 226

Lochbohrung Ø 12mm



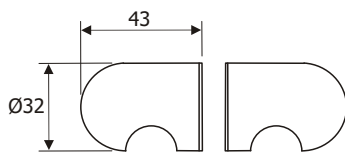
Art.Nr. 220 301

Lochbohrung Ø 12mm



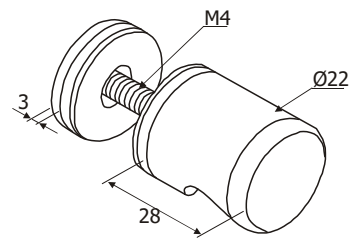
Art.Nr. 220 302

Lochbohrung Ø 12mm



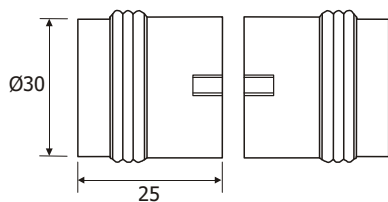
Art.Nr. 220 303

Lochbohrung Ø 12mm



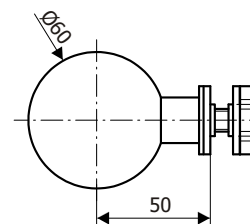
Art.Nr. 220 634

Lochbohrung Ø 12mm



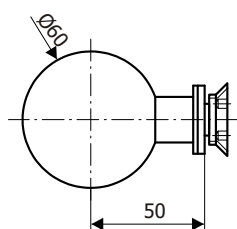
Art.Nr. 224 601

Lochbohrung Ø 16mm



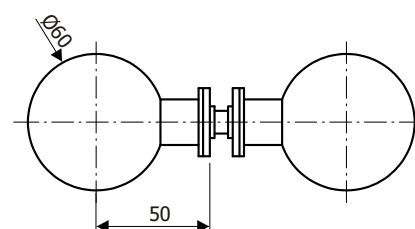
Art.Nr. 224 602

Senklochbohrung Ø 32/22mm



Art.Nr. 224 620

Lochbohrung Ø 16mm



Art.Nr. 220 219



Art.Nr. 220 225



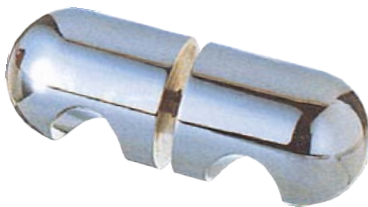
Art.Nr. 220 226



Art.Nr. 220 301



Art.Nr. 220 302



Art.Nr. 220 303



Griffe auch einseitig
mit Abdeckung lieferbar

Art.Nr. 220 634



Art.Nr. 224 601

Edelstahl-Kugelgriff, poliert



Art.Nr. 224 602

Edelstahl-Kugelgriff, poliert



Art.Nr. 224 620

Edelstahl-Kugelgriffe, poliert

